

MILITARY SPECIFICATION

SKIRT, WOMAN'S (EXERCISE)

This specification has been approved by the Department of Defense and is mandatory for use by the Departments of the Army, the Navy, and the Air Force.

1. SCOPE

1.1 Scope. This specification covers the requirements for a skirt worn by women of the Army, the Navy, and the Air Force.

1.2 Classification. The skirt shall be of one type in the following sizes and lengths, as specified (see 6.2):

Sizes — 8, 10, 12, 14, 16, 18, 20, 38 (22), 40 (24), 42 (26), and 44 (28).

Lengths — Short, Regular, and Long.

2. APPLICABLE DOCUMENTS

2.1 The following specifications and standards, of the issue in effect on date of invitation for bids, form a part of this specification:

SPECIFICATIONS

FEDERAL

- V-B-871 — Buttons.
V-T-276 — Thread; Cotton.
UU-P-268 — Paper, Kraft, Wrapping.
CCC-T-191 — Textile Test Methods.

DDD-S-751 — Stitches; Seams; and Stitching.

PPP-B-636 — Boxes, Fiber.

PPP-T-60 — Tape; Pressure Sensitive Adhesive, Waterproof—For Packaging and Sealing.

MILITARY

JAN-T-414 — Tape, Cotton, Woven.

MIL-C-11854 — Cloth, Cotton, Denim.

MIL-L-15040 — Labels, Garment.

MIL-T-16338 — Tickets; Cap and Hat.

STANDARDS

MILITARY

MIL-STD-105 — Sampling Procedures and Tables for Inspection by Attributes, and Appendix thereto.

MIL-STD-129 — Marking for Shipment and Storage.

(Copies of specifications and standards required by contractors in connection with specific procurement functions should be obtained from the procuring agency or as directed by the contracting officer.)

3. REQUIREMENTS

Short — S
 Regular — R
 Long — L

3.1 **Guide sample.** Samples are furnished as a guide only (see 6.2). Variations from the specifications may appear in the sample, in which case, the specification shall govern. Except for such variations the design, quality and workmanship, in all respects not covered by this specification, shall be equal to the guide sample.

3.2 **Sample approval.** Unless otherwise specified, the contractor shall submit to the contracting officer one finished skirt cut in accordance with government furnished patterns and conforming to the requirements of design, construction, workmanship, and appearance of this specification (see 6.2).

3.3. Materials.

3.3.1 **Basic material.** The material for making the skirt shall be cloth, cotton, denim conforming to the requirements of Specification MIL-C-11854.

3.3.1.1 **Color.** The color of the cloth shall be USAF shade 516.

3.3.2 **Buttons.** The buttons shall be white, 22-line, and shall conform to the requirements for type II, class D1a, melamine formaldehyde, figure 2, style 5 of Specification V-B-871.

3.3.3. **Thread, cotton.** The thread shall be white, and shall conform to the requirements for type IA2, 3-cord, ticket numbers 40 and 60 of Specification V-T-276.

3.3.4 **Tape, cotton, woven.** The tape used for hanger loops shall be white and shall conform to the requirements for type I, class 2 of Specification JAN-T-414.

3.3.5 **Ticket.** The size shall conform to the requirements of MIL-T-16338. The size shall consist of the numerical size and the applicable abbreviation for length. Length abbreviations are as follows:

3.3.6 **Labels.** The labels shall be made of cloth conforming to the requirements for type III, size 3 of Specification MIL-L-15040 or applied to the garment by means of decalcomania marking by heat and pressure or by stamping. The labels shall be printed or transferred to the garment in bold block letters using black indelible ink. A margin of $\frac{3}{16}$ inch for cloth labels shall be allowed on each four sides for the purpose of sewing. The imprint of the marking shall show good color fastness and shall be legible after ten cycles of washing when tested as specified in 4.4.

3.3.6.1 **Legend.** The following information shall be provided on the contractors label in letters and numerals not less than $\frac{3}{32}$ inch in height except the nomenclature which shall be not less than $\frac{11}{64}$ inch in height, for example:

(Nomenclature)
 MIL-S-
 Stock No.
 Manufacturer's Name
 Contract or Order No.
 Size

Abbreviations to be used for applicable length are as follows:

Short — S
 Regular — R
 Long — L

3.4 **Description.** The skirt shall be an 8-gore skirt with a buttoned front closure down the entire length of skirt and a let-out seam at center back. It shall have an attached waistband, and one patch pocket on right front. (see figure 1).

3.5 **Patterns.** Standard patterns will be furnished by the Government to the contractor for cutting working patterns (see 6.2). The working patterns shall be identical to the Government patterns. Neither the

Government patterns nor the working patterns shall be altered in any way.

3.5.1 *List of pattern parts.* The list of pattern parts shall comprise the specified material and the number of cut parts listed below:

3.5.1.1 *Cloth, cotton, denim:*

Pattern	Cut parts
Front gores	2
Side front gores	2
Back gores	2
Side back gores	2
Waistband	2
Pocket	1

3.6 **Stitches, seams, stitching.** The stitch, seam, and stitching types specified herein shall conform to the requirements of Specification DDD-S-751. Unless otherwise specified, the seam allowance shall be $\frac{5}{8}$ inch gauge; superposed plies shall be placed face-to-face; ends and edges of seams shall be even; topstitching, edge stitching, the stitching on a hem next to a turned under edge, and along edges

of label shall be $\frac{1}{16}$ to $\frac{1}{8}$ inch from edge. The ends of a line of stitching not crossed by another line of stitching shall be backtacked for $\frac{1}{4}$ to $\frac{3}{8}$ inch. Where 401 stitch type is used the looper (under) thread shall be on the inside of garment. The stitch types, threads and number of stitches shall be as shown in table I.

3.7 **Construction.** The skirts shall be constructed in accordance with Government patterns, notches and markings therein, and all the operations shown in table II. The contractor may vary the sequence of operations provided the finished skirts are identical with those produced by following the exact sequence as shown. Unless otherwise specified, all exposed seam edges shall be serged, $\frac{1}{2}$ inch gauge deep finished, and pressed open. Measurements are based on the finished skirt size 14 regular.

3.8 **Sizes and measurements.** Sizes and measurements shall be as shown in table III. Measurements shall be taken as indicated in figure 1. Figures are furnished for information only. To the extent of any inconsistencies between the written specification and the figures, the written specification shall govern.

TABLE I. *Stitch types, threads, and number of stitches*

Operations	Stitch types	Threads		No. of stitches
		Top or Needle	Lower or looper	
Stitching—general	301 or	40/3	40/3	12 to 14 per inch
	401	40/3	60/3	12 to 14 per inch
Buttonholes— $\frac{5}{8}$ inch	101 or	40/3	40/3	46 per buttonhole
	304 or 404	40/3		
Button sewing	101 or	40/3	40/3	21 per button 16 per button
	301	40/3		
Felling—hand —machine	501	60/3		3 to 5 per inch
		60/3		3 to 5 per inch
Bartack		40/3	40/3	28 or 42 per bartack
Serging (overedge stitched)	503 or 505	60/3	60/3	6 to 8 per inch

TABLE II. Construction

Operations	Seam or stitching types
<p>1. <i>Cutting</i></p>	
<p>1.1 Cut component parts in accordance with instructions and directional lines noted on the Government patterns. All component parts of each skirt shall be cut from the same piece of fabric. Unless the front edge of each front gore (inner edge of front opening hem-facing) is placed along the selvage of the material, add $\frac{5}{16}$ ($\pm \frac{1}{16}$) inch for hemming the edge. The waistband sections may be cut with a seam at the top, in which case add a $\frac{5}{16}$ inch gauge seam allowance along top edge of each waistband piece.</p>	
<p>2. <i>Replacement of damaged parts</i></p>	
<p>2.1 Any part containing damages, holes or seriously weakening defects such as smashes, multiple floats and slubs likely to develop into a hole shall be replaced at time of cutting.</p>	
<p>2.2 Any part damaged during the manufacturing process by needle chews, which may be expected to develop into a hole, scissor or knife cuts, tears, holes, mends, burns, or large exposed drill holes shall be replaced.</p>	
<p>3. <i>Shade marking</i></p>	
<p>3.1 Mark all component parts to ensure a uniform shade throughout each skirt.</p>	
<p>3.2 The use of fastening devices or sew-on tickets for shade marking is prohibited.</p>	
<p>3.3 The use of pad numbering machines, rubber stamp or pencil on the back of material is acceptable provided the numbering does not show through to the outer side of the garment and wherever possible, numbers to be covered by seam allowance.</p>	
<p>4. <i>Serging (overedge stitching)</i></p>	
<p>4.1 All exposed (raw) seam edges in the finished skirt shall be serged (over-edge stitched), $\frac{5}{16}$ ($\pm \frac{1}{16}$) inch gauge in depth. Where there are two layers of cloth, they shall be serged together.</p>	SSa-1
<p>5. <i>Prepare left and right front gores, and attach label.</i></p>	
<p>5.1 <i>Front opening facing</i></p>	
<p>5.1.1 Turn under the raw edge of front facings $\frac{5}{16}$ ($\pm \frac{1}{16}$) inch and hem $\frac{1}{16}$ to $\frac{1}{8}$ inch from edge. When the edge is selvaged it need not be turned in. Raise stitch front edge of facings $\frac{1}{16}$ to $\frac{1}{8}$ inch from edge.</p>	OSf-1
<p>5.1.2 Stitch the four edges of a garment label to the face of the left hem-facing, 6 (± 1) inches from finished bottom of skirt, with bottom of label along inner edge of hem-facing.</p>	LSa-1
<p>6. <i>Join front and side front gores</i></p>	
<p>6.1 Stitch the front and side front gores together for the right and left skirt fronts.</p>	SSa-1
<p>7. <i>Prepare and attach patch pocket</i></p>	
<p>7.1 Stitch a 1 ($\pm \frac{1}{4}$) inch wide hem finished in top of pocket.</p>	EFb-1
<p>7.2 Turn under the edges of the pocket and stitch pocket to right skirt front, the pocket centered across the markings indicated on pattern. Extend stitching at each corner of pocket to form a rectangle $\frac{3}{16}$ to $\frac{1}{4}$ inch wide with lower end of rectangle on stitching of pocket hem. The pockets may be precreased. The gore seam under pocket shall be pressed open.</p>	LSd-1

TABLE II. Construction (cont'd)

Operations	Seams or stitching types
7. <i>Prepare and attach patch pocket (Continued)</i>	
7.3 The finished pocket shall measure $5\frac{1}{4}$ ($\pm \frac{1}{4}$) inches wide and $5\frac{1}{2}$ ($\pm \frac{1}{4}$) inches in depth.	
8. <i>Join back and side back gores, close side seams</i>	
8.1 Stitch the back and side back gores together for the right and left skirt backs.	SSa-1
8.2 Stitch the side seam joining the side front and side back gores on each side.	SSa-1
9. <i>Attach waistband, hanger loops, and size ticket</i>	
9.1 If each waistband section is one-piece, attach as in 9.2 or 9.3; and if each waistband section is two-piece attach as in 9.4. All seams joining skirt gores shall be spread open. Insert in seam at bottom of waistband under the inside ply the following:	
9.1.1 The superposed ends of a double piece of tape to form a hanger loop $1\frac{1}{2}$ ($\pm \frac{1}{4}$) inches long finished, centered across each side seam.	
9.1.2 The top of a size ticket, centered across the seam joining the right back and side back gores.	
9.2 Stitch the face side of each waistband section to the inside top of the corresponding half of skirt. Fold waistband double lengthwise, turn ends inward and bottom edge under; edge stitch top and ends, and topstitch bottom of each waistband.	AS BSg-2, SSc-1 and OSf-1
9.2.1 The ends of waistband may be stitched with the waistband folded face-to-face, then turned and edge stitched.	SSe-2
9.3 Fold each waistband section double lengthwise with the face side on the outside; turn the ends and bottom edges inward. Insert between bottom edges of each waistband section, the top of the corresponding half of skirt; edge stitch top and ends, and top stitch bottom edge of each waistband section.	LSe-1, SSs-1 and OSf-1
9.3.1 The ends of waistband may be stitched with waistband folded double, face-to-face, then turned and edge stitched.	SSe-2
9.4 Turn inward the top and bottom edges and ends of two superposed pieces for each section of waistband with the face sides on the outside. Insert between bottom edges of each waistband section the top of the corresponding half of skirt; edge stitch top and ends, and topstitch bottom edge of each waistband section.	LSg-2 and SSc-1
10. <i>Close center back seam</i>	
10.1 Stitch the centerback seam $1\frac{1}{8}$ ($\pm \frac{1}{8}$) inches deep from bottom of skirt to top of waistband.	SSa-1
10.2 Stitch across outlet seam at bottom of waistband through all plies of material with seam spread open.	OSa-1
11. <i>Make hem at bottom</i>	
11.1 Fell by hand or machine the turned under inner edge of hem at bottom of skirt, the hem shall finish 3 ($\pm \frac{1}{4}$) inches deep. Before felling by hand, the turned under inner edge of hem may be edge stitched. All seams joining skirt gores shall be spread open.	SSm-1 (optional, EFa-1)
11.2 Edge stitch front end of hem turn-up to front edge on each side with the stitching superposed on edge stitching.	SSa-1

TABLE II. Construction (cont'd)

Operations	Seam or stitching types
<p>12. <i>Make buttonholes</i></p> <p>12.1 Stitch nine horizontal, $\frac{5}{8}$-inch long, straight barred type buttonholes, the end of each buttonhole $\frac{5}{8}$ ($\pm \frac{1}{8}$) inch from front edge located as follows:</p> <p>12.1.1 One centered in front end of right waistband.</p> <p>12.1.2 Eight in front edge of right skirt front with top buttonhole 1 ($\pm \frac{1}{4}$) inch below waistband and the other seven buttonholes $2\frac{7}{8}$ ($\pm \frac{1}{4}$) inches apart for shorts, 3 ($\pm \frac{1}{8}$) inches apart for regulars, and $3\frac{1}{8}$ ($\pm \frac{1}{4}$) inches apart for longs.</p>	
<p>13. <i>Sew-on buttons</i></p> <p>13.1 Stitch nine, 22-line buttons to correspond with respective buttonholes; the center of each button $\frac{7}{8}$ ($\pm \frac{1}{4}$) inches from edge as follows:</p> <p>13.1.1 One, on front end of left waistband.</p> <p>13.1.2 Eight, on front edge of left skirt front.</p>	
<p>14. <i>Cleaning</i></p> <p>14.1 Remove any soil or grease spots.</p> <p>14.2 Trim thread ends and remove all loose ends.</p> <p>14.3 Remove all shade markings.</p>	
<p>15. <i>Pressing</i></p> <p>15.1 Press all gore's seams open with heated pressing iron or machine.</p>	
<p>16. <i>Buttoning</i></p> <p>16.1 Button ends of waistband and front edges of skirt front.</p>	

TABLE III. Sizes and measurements

Size	Waist A	Hips B	Sweep C	Length D		
				Short	Regular	Long
	<i>Inches</i>	<i>Inches</i>	<i>Inches</i>	<i>Inches</i>	<i>Inches</i>	<i>Inches</i>
8	23	36½	66½	25½	27½	29½
10	24½	38	68	25½	27½	29½
12	26	39½	69½	25½	27½	29½
14	27½	41	71	25½	27½	29½
16	29	42½	72½	25½	27½	29½
18	30½	44	74	25½	27½	29½
20	32	45½	75½	25½	27½	29½
38 (22)	33½	47	77	25½	27½	29½
40 (24)	35½	49	79	25½	27½	29½
42 (26)	37½	51	81	25½	27½	29½
44 (28)	39½	53	83	25½	27½	29½
Tolerance	$\pm \frac{1}{2}$	± 1	± 1	$\pm \frac{1}{2}$	$\pm \frac{1}{2}$	$\pm \frac{1}{2}$

Finished measurements shall be taken with skirt fully buttoned, smoothed out, and in flat position.

A. *Waist.* Double the measurement taken across top edge of waistband from side edge to side edge.

B. *Hips*. Double the measurement taken across front of skirt between points located on each side edge. Points shall be located $7\frac{1}{2}$ inches from bottom edge of waistband.

C. *Sweep*. Double the measurement taken straight across bottom part of skirt from one side edge to opposite side edge.

D. *Length*. Measurement taken along center of front or back of skirt from bottom edge of waistband to bottom edge of skirt.

3.9 **Workmanship**. The quality of manufacture shall be controlled to guarantee conformity with the high standard of workmanship required by the acceptable quality levels.

4. QUALITY ASSURANCE PROVISIONS

4.1 **General**. Sampling, inspection and testing of the items covered by this specification shall be in accordance with 4.2, 4.3 and 4.4. Sampling, inspection and testing of components shall be in accordance with applicable

specifications for such components. The Government reserves the right to perform sampling, inspection and testing for any requirements of this specification which are not specifically included in 4.2, 4.3 and 4.4.

4.2 **Sampling**. Sampling shall be conducted in accordance with Standard MIL-STD-105 (see 6.2). When MIL-STD-105 specifies an action by the Government, it shall, at the option of the Government, be performed either by the Government, or by the contractor under the supervision of the Government inspector.

4.3 **Inspection**. Inspection shall be made by the Government to determine compliance with this specification (see 6.2). Visual inspection of the item shall be in accordance with the classification of defects (table IV) and acceptable quality levels (4.3.2). The Government reserves the right to classify as a defect any departure from this specification not specifically listed in table IV.

TABLE IV. *Classification of defects*

Examine	Defects	Major	Minor
Buttons and buttonholes	Any buttonhole omitted or added	X	
	One or more broken stitches in 3 or more buttonholes	X	
	Buttonholes stitching not securely caught on fabric, i.e., stitches can be easily pulled away from edge of material.	X	
	Buttonholes not corresponding to size of buttons, so that they do not button properly.	X	
	Tacking omitted or loose on 1 or both ends of 2 or more buttonholes.	X	
	Tacking omitted or loose on 1 or both ends of 1 buttonhole.		X
	One or more broken stitches in 1 or 2 buttonholes		X
	More than 2 skipped stitches in 1 or more buttonholes		X
Cleanness	Undercut buttonholes		X
	Spots or stains judged difficult to remove seriously affecting appearance.	X	
	Removal spots or stains clearly noticeable		X
Color and shade:	Untrimmed thread ends indicating omission of proper trimming operation.		X
Material	Color other than specified	X	
	Variation of shade within a skirt affecting appearance		X
Thread			
Buttons	Color other than specified or approved	X	

TABLE IV. Classification of defects (Cont'd)

Examine	Defects	Major	Minor
Construction details	Any construction detail not conforming to contractor's approved sample, and not classified herein, seriously affecting appearance or serviceability.	X	
Front opening	Fronts uneven at bottom by more than $\frac{1}{4}$ inch when fully buttoned.		X
Gore seam edges	Any gore seam edge not serged, where specified	X	
Hems	Any hem puckered, pleated or distorted affecting appearance.		X
Garment label	Omitted or insecurely attached.	X	
Marking and inscription	Any marking or inscription omitted, incorrect or illegible.	X	
Material	Holes, smashes, slubs, floats or any other defect seriously affecting appearance or serviceability.	X	
Measurements	Any measurement deviating from nominal dimension specified in table of measurements by more than twice the tolerance.	X	
	Any measurement deviating from nominal dimension specified by more than the tolerance but not more than twice the tolerance.		X
Pocket	Pocket other than specified or approved type	X	
	Misplaced, seriously affecting appearance or serviceability.	X	
	Top of pocket corners not secured as specified		X
Pressing	Pressing omitted		X
Seams and stitching:			
General	Any seam pleated, twisted or distorted seriously affecting appearance or serviceability.	X	
	Any part of skirt caught in an unrelated stitching operation seriously affecting appearance or serviceability.	X	
	Any specified stitching omitted seriously affecting appearance or serviceability.	X	
	Wrong seam or stitch type		X
Open seams (consecutive skipped or broken stitches).	Any open seam on outside of skirt more than $\frac{1}{2}$ inch	X	
	Two or more open seams on outside of skirt each $\frac{1}{2}$ inch or less.	X	
	One open seam on outside of skirt $\frac{1}{2}$ inch or less		X
Raw edges (any specified finished edge appearing cut, torn or unfinished).	Any raw edge on outside of skirt $\frac{1}{2}$ inch or less		X
	Three or more raw edges on outside of skirt each $\frac{1}{2}$ inch or less.	X	
	Two raw edges on outside of skirt each $\frac{1}{2}$ inch or less		X
	Any raw edge on inside of skirt 2 inches or more		X
Stitches skipped or broken (on raised or edge stitching when seam is seamed, turned, and stitched.)	Stitches skipped or broken for a distance of $\frac{1}{2}$ inch or more.		X
Stitch tension	Tight tension evidenced by puckering	X	
	(Note: Tight tension shall be classified as a defect only when an open seam or broken stitches result when a moderate strain is applied along the length of the seam by the inspector.)		

TABLE IV. *Classification of defects (Cont'd)*

Examine	Defects	Major	Minor
Seams and stitching (Continued)	Loose tension resulting in a loosely secured seam	X	
	Loose tension on edge or raised stitching, affecting appearance.		X
Size ticket	Omitted		X
Tape loops	Any omitted or insecurely attached		X
Waistband	Twisted, pleated, irregular in width or distorted seriously affecting appearance or serviceability.		X
	Top ends uneven by $\frac{1}{4}$ inch or more at front opening when buttoned.		X
Workmanship	Holes, tears or cuts	X	
	Burn or scorch marks seriously affecting appearance or serviceability.	X	
	Reworked damages seriously affecting appearance or serviceability.	X	
	Needle chews, clearly noticeable and which may develop into a hole.	X	

4.3.1 *Inspection of components.* Inspection of components shall be made in accordance with applicable subsidiary specifications and drawings referenced herein to the extent applicable, except that this specification shall govern in the event of conflict.

4.3.1.1 *Sampling for testing.* When any materials are furnished by the Government, such materials shall not be sampled or tested unless specifically requested by the Government. The sample unit for testing of each component shall be the quantity necessary to perform all required tests one time each. Lot sizes are expressed as follows:

Cloth — yards
Tape — yards
Thread — cone or spool
Buttons — each
Labels — each

4.3.1.2 *Testing criteria.* Unless otherwise indicated in applicable specification, the sample unit for testing shall be as follows:

Cloth, cotton, denim — 3 yards full width
Buttons — 40 each
Labels — 10 each
Tape — 3 yards
Thread — 1 cone or spool

The inspection level for each component shall be L-2 of table VII, Appendix to MIL-STD-105. The number of units for product (sample size) drawn from each lot shall be as shown in table IV of MIL-STD-105. The AQL for each characteristic tested shall be 6.5 defects per 100 units.

4.3.2 *Acceptable quality levels.* The acceptable quality levels shall be as follows:

Majors — 2.5 defects per 100 units
Totals — 15.0 defects per 100 units
(majors and minors combined)

4.4 *Tests.* Wherever applicable, tests in supplemental specifications listed in 2.1 shall be conducted in accordance with methods prescribed in Specification CCC-T-191 and as specified in table V.

TABLE V. *Test methods*

Test	Reference requirements	Method
Colorfastness to laundering ¹	3.3.6	5610

¹ Except that samples shall be subjected to a minimum of 10 cycles of washings.

5. PREPARATION FOR DELIVERY

5.1 Packaging.

5.1.1 Level A. Each skirt shall be folded as follows: Step 1. Fold both sides of the buttoned skirt in so that the width is approximately 15 inches. Step 2. Bring bottom of skirt up approximately 6 inches and then fold in half so that the folded garment measures approximately 11½ inches by 15 inches.

5.1.2 Level C. The skirts shall be packaged in accordance with the supplier's normal practice.

5.2 Packing.

5.2.1 Level A. Twelve domestic shipping containers of skirts, packed as specified in 5.2.2, shall be overpacked six in length, one in width, and two in depth, within an export shipping container conforming to the requirements of type I or II, class 2, grade 3, style FOL of Specification PPP-B-636. The inside dimensions of the export shipping container shall be 46¾ inches in length, 16¼ inches in width, and 24 inches in depth. The requirements for closure and strapping of the boxes shall conform to the Appendix of PPP-B-636, except that the container flaps shall be glued (not stitched), and the boxes strapped with flat steel straps only. In addition, all corners and joints of the boxes shall be sealed by the application of a 3-inch wide cloth tape conforming to the requirements of type II, class 1, olive drab color of Specification PPP-T-60.

5.2.2 Level B. Fourteen (14) skirts of one size and length only, packaged as specified in 5.1.1, shall be packed in a domestic shipping container, as follows: Place the fourteen (14) skirts flat in the container, with every two garments reversed, and the length of the garments parallel to the side panels of the container. The top and bottom of each pack of skirts shall be completely covered with a sheet of kraft paper of not less than 30 pounds basis weight (24 by 36-500) conform-

ing to the requirements of grade B of Specification UU-P-268. The requirements for the shipping container shall be as specified in 5.2.2.1.

5.2.2.1 Shipping container. The domestic fiberboard shipping container shall conform to the requirements of type I or II, class 1, style CSSC, of Specification PPP-B-636. When type I, class 1 containers are used the fiberboard shall be fabricated from B-flute corrugated medium. The minimum bursting strength of the solid or corrugated fiberboard shall be 350 p.s.i. The inside dimensions of the fiberboard shipping container shall be 15½ inches in length, 11⁹/₁₆ inches in width, and 7¹/₈ inches in depth.

5.2.2.2 Closure. All flaps of the fiberboard shipping container shall be sealed with an adhesive (glue), used commercially for fiberboard containers, by application throughout the entire area of contact between the flaps; or by a combination of metal stitching the bottom flaps and sealing the top flaps with an adhesive (glue).

5.2.3 Level C. The skirts, packaged as described in 5.1, shall be packed in a manner which will insure acceptance and safe delivery at destination. Shipping containers shall conform to the Consolidated Freight Classification Regulations or to regulations of other carriers as applicable to the mode of transportation.

5.3 Marking. Shipping containers shall be marked in accordance with the requirements of Standard MIL-STD-129.

5.3.1 Nomenclature. Skirt, Woman's (Exercise).

6. NOTES

6.1 Intended use. The skirt covered by this specification is intended for wear with the woman's chambray shirt and exercise shorts by women in the armed services.

6.2 Ordering data. Procurement documents should specify the following:

- (a) Title, number, and date of this specification.
- (b) Sizes and lengths required.
(See 1.2).
- (c) Availability of guide sample.
(See 3.1).
- (d) Requirements for sample approval.
(See 3.2).
- (e) Availability of patterns.
(See 3.5).
- (f) Sampling and inspection procedures required. (See 4.2 and 4.3).
- (g) Level(s) of packaging and packing required. (See 5).

Notice. When Government drawings, specifications, or other data are used for any purpose other than in connection with a definitely related Government procurement operation, the United States Government thereby incurs no responsibility nor any obligation whatsoever; and the fact that the Government may have formulated, furnished, or in any way supplied the said drawings, specifications, or other data is not to be regarded by implication or otherwise as in any manner licensing the holder or any other person or corporation, or conveying any rights or permission to manufacture, use, or sell any patented invention that may in any way be related thereto.

Custodians:

Army—Quartermaster Corps
Navy—Bureau of Supplies and Accounts
Air Force

Other interests:

Army—M
Navy—MC

Preparing activity:

Navy—Bureau of Supplies and Accounts

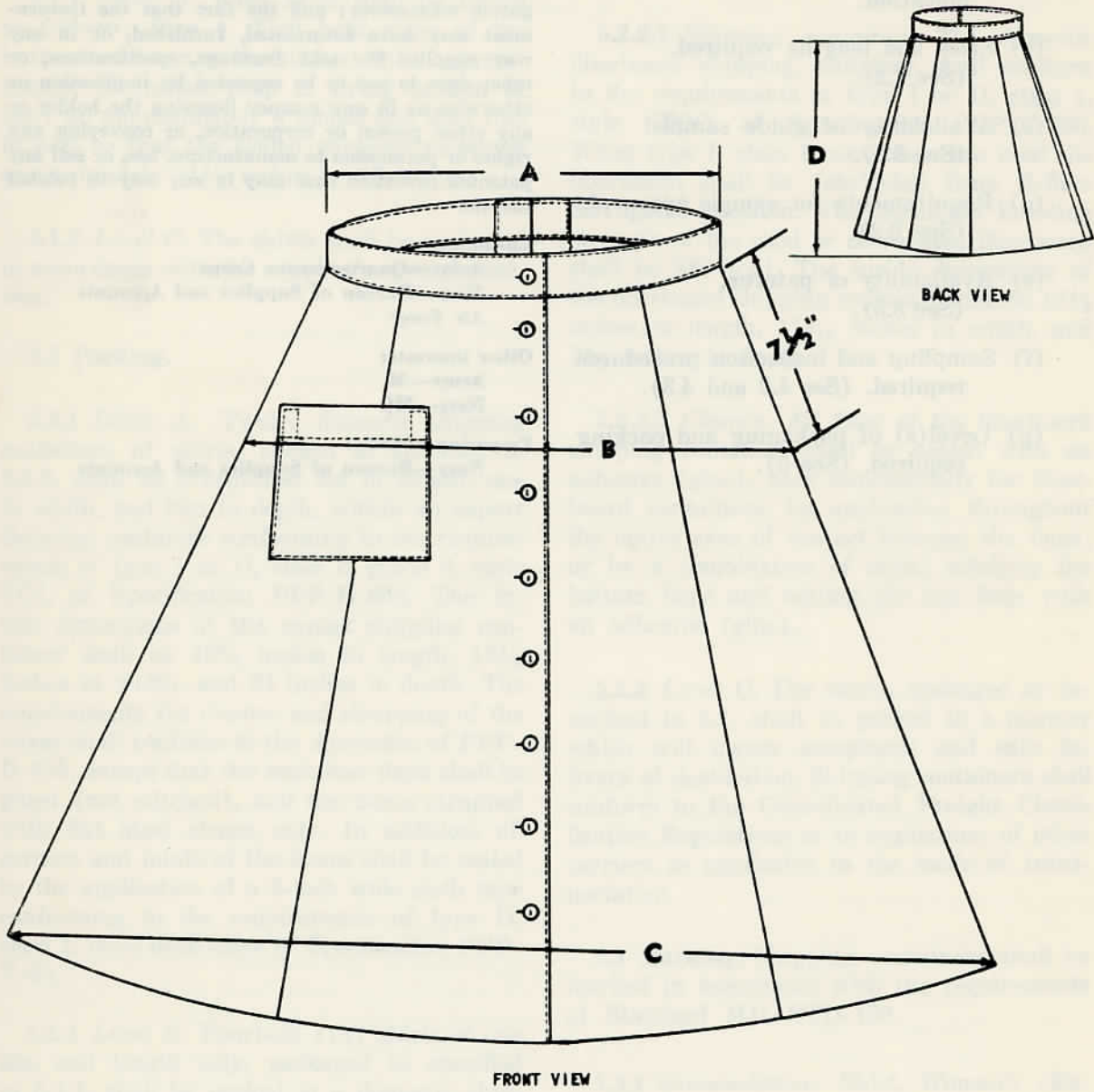


Figure 1— SKIRT, WOMAN'S (EXERCISE)